



Newsletter

Volume 6 Issue 2

March 15, 2026



St. Giles Church
Richmond



WEAG
Henrico County



Covenant
Woods
Hanover County



Huguenot Rd. Baptist
Chesterfield County

What Do You Think About Second Half?

Second Half thrives as an organization because of its people-Members, Facilitators, Board Members, volunteers. Now every member has an opportunity to share what they feel about Second Half.

The Second Half Board has authorized a short survey that gives members the opportunity to report their opinions on various aspects of the SH experience. The online survey only takes a few minutes to complete and covers topics such as types of studies, which parts of Second Half are more or less important to you, and how you feel in general about Second Half. It also allows you to offer ways you feel Second Half can be improved.

Here is the link to complete the survey: [SH Survey](#). Just "click" on the blue link and it will take you to the survey. If you have printed out the newsletter, there is also a link in the email in which the Newsletter was sent.

You can only complete the survey one time. It will be available to fill out until March 31, 2026. Responses are confidential. **No one, including the Board, Google and the survey administrator, can identify individual responses unless you choose to share your email.**

The Board is hoping EVERYONE will participate!



Chapter Reports

St. Giles-Rob Green

Since our last newsletter, we have experienced a meaningful development in our St. Giles meetings. Our song leader, Jeff Butler, now offers a thoughtful, historical reflection on the hymn we are about to sing. He shares the historical context, along with insights into the author and the circumstances surrounding the hymn's composition.

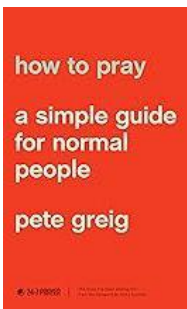
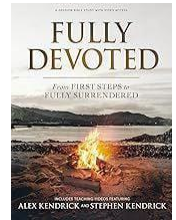


To accompany our “resplendent” singing, we are now also joined by a pianist, Cliff Whitehouse, a gifted musician who beautifully enhances and enriches our worship experience.

We also continue to host five small groups, each consisting of approximately ten to twelve men, providing an opportunity to discuss individual needs as well as the book or video selected for that session.

HRBC-Scott Ratliff

We concluded our study, *Fully Devoted*, by Alex and Stephen Kendrick toward the end of 2025. While HRBC members found the series advanced some helpful ideas and ideals, as a group we thought the tone of the series to be somewhat “commercial” in its presentation. This feeling was touched upon in our earlier chapter report and the feeling remained to the end. In the end, though, we are glad we worked through the series.



We have now begun a new study entitled *How to Pray, A Simple Guide for Normal People* by Pete Greig. This study uses the Lord's Prayer as the basic example of how to pray. The author began by looking at the prayer as a whole followed by sessions that look into the differing aspects of prayer as demonstrated by Our Lord. We have also begun to look at the prayer form as shown in the acrostic for PRAY, i.e. “pause”, “rejoice”, “ask” and “yield.” There seems to be a group consensus emerging that although God knows all we need before we ask, He still asks us to pray to establish and continue fellowship, communion and direct contact with Him, which is essential to our Godly walk and growth in Him. We have enjoyed this series thus far. (*continued next page*)

Chapter Reports

HRBC-Scott Ratliff *(continued from previous page)*

Unfortunately, the recent period has seen a number of health issues visited upon members of the HRBC group, including spouses and other relatives and family members. These have been detailed in our bi-monthly prayer requests. We would ask the larger group to be specific in prayer for these individual needs.

The HRBC Chapter continues to grow together in community and fellowship, to the point where we look forward to being together and sharing the experience(s) of what God is doing in each of our lives. We can thus see that the Mission Statement of Second Half is being fulfilled in a real and substantive way.

Covenant Woods-Stan Wright

Covenant Woods membership continues to go up. A few more men joined in the past several months. Personal invitations from existing members again initiated the new attendance. Let's all look for someone to invite to our meetings!



Covenant Woods will be halfway through the *How to Pray* study by the time this newsletter is published. It has been well received and generated discussion about how "The Lord's Prayer" is not only a prayer for us to pray, but it is also a model prayer for how we should pray during our other prayer times. Looking at each of the points in "The Lord's Prayer" shows us how they relate to adoration, petition, intercession, confession both to God for our sins and forgiveness of others (can be hard to do sometime), as well as spiritual warfare. Combined with quiet time listening to what God has to say and for direction, can draw us closer to Jesus Christ and God.

We all look forward to the coming of spring, a time to really see God's glory in the nature He created - the trees and flowers budding out and blossoming. Thank you God for your creations!



Chapter Reports (continued)

WEAG Church-Chris Meyer

John Flournoy was a long time member our Second Half group at WEAG. He mostly sat quietly but when he spoke there was wisdom in what he said and we listened. He died on Christmas Eve 2025 and his funeral was held recently, postponed in part by the recent inclement weather. Six of us from Second Half attended the funeral where, along with the obituary, we learned a lot of things about John.



John Flournoy was a long time member our second half group at WEAG. He mostly sat quietly but when he spoke there was wisdom in what he said and we listened. He died on Christmas Eve 2025 and his funeral was held recently, postponed in part by the recent inclement weather. Six of us from Second Half attended the funeral where, along with the obituary, we learned a lot of things about John.

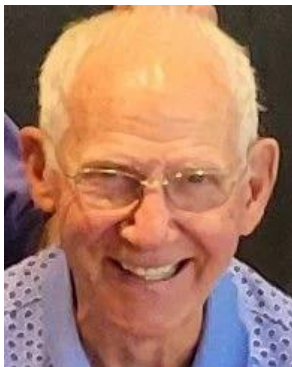
He went to Thomas Jefferson High School and went with several friends to the University of Virginia where he also graduated. He married his first wife in 1964 just before he headed off to Vietnam as a Second Lieutenant. He returned and worked in finance and had two children. In 1983 he married again and acquired two step children which he treated as his own. They all became very active at Tuckahoe Presbyterian Church where after John retired he became even more active. At times he was the church secretary, a ruling elder, and served on the nominating committee and Stewardship and Financed Committee. He led a Monday Men's Bible Study and enjoyed representing the church at meetings of The Presbytery of the James. He played bridge regularly and was a fearsome player.

John was Caucasian, and so there was some surprise amongst us when one of the sons who spoke was tall, thin and clearly Black. It turned out that that son had been in a single parent family when the mother died. John and his wife adopted him and took care of him as their own.

There are many other things we could say about John but the point is that almost all of what we learned after his death were things that we didn't know. And he had been a faithful member of our Second Half group for years. This got us to thinking that we really don't know the members of our group well, indeed hardly at all. When new members come in we do have them introduce themselves briefly but after that there is only discussion of the lessons. We have decided that this isn't good enough. If we really are going to have true fellowship we need to know our members much better. The leadership has been talking and we will be putting into practice a plan to have our members express themselves so we can get to know them better. We will keep you advised on what we come up with and how it works out.

Get to Know-Tony Wilson

By Walt Andes



Editor's Note: Tony Wilson founded the WEAG Chapter of Second Half where he is a co-facilitator. He also attends the Covenant Woods Chapter and has served in recent years as Chairman of the Second Half Executive Board. He joined Second Half in 2014.

Why did Tony join SH? Tony had known Gordon Prior for years, and prior to his retirement, he told Gordon that he was going to join the group. Upon his 2014 retirement, he subsequently joined the Covenant Woods chapter. At that time, he was attending West End Assembly of God (WEAG) and got the idea to pitch WEAG on starting a chapter there. The result was the birth of SH's second Chapter 11 years ago.

What does Tony enjoy most about my Second Half? Tony finds the books and videos rewarding. They've continued to bless him, and have stimulated and strengthened a closer relationship with Jesus Christ.

Church--Elk Creek Baptist Church at Lake Anna.

Career--Sales and marketing. He started his career with NCR, then worked in advertising with WRVA and other Richmond radio stations. He ended his career working in marketing for Averett University.

Hobbies--A direct quote: "Fishing, fishing and fishing." Also, reading.

Favorite foods--Spaghetti, egg salad sandwiches, and tuna fish sandwiches (Not all at the same time!).

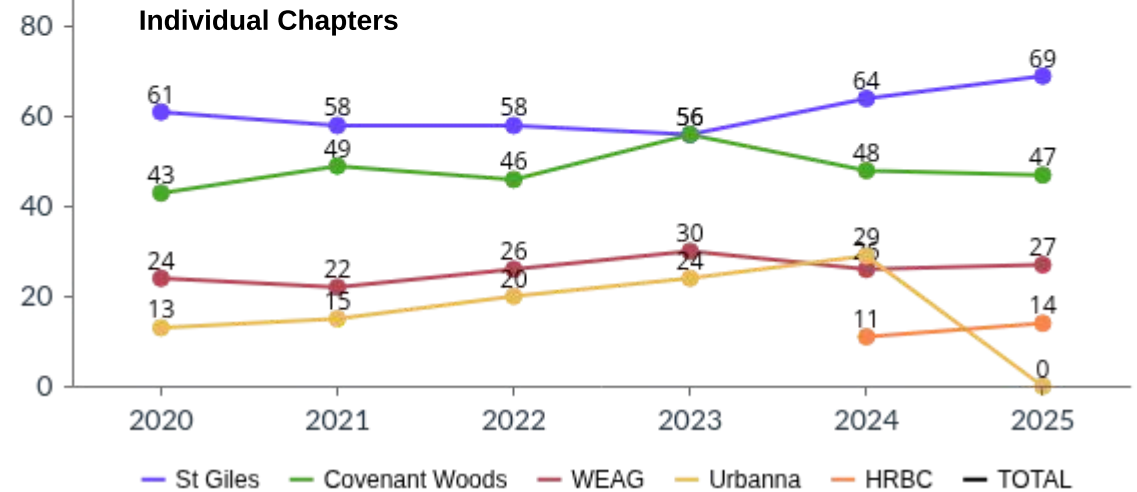
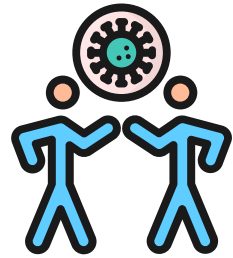
Why does Tony think Second Half is important for older men? "We ain't done yet," Tony says. The group encourages him to stay connected to God, Jesus, and other men, and to learn from other men how to prepare for future eventualities, encompassing such things as health issues, loss of a spouse and other "aging" matters.

What SH study has Tony enjoyed the most? *Celebration of Discipline*. Also, the book *Halftime* inspired Tony to engage the retired people where he lives--in the Lake Anna community. Focusing on his church, he formed a group known as Purposeful Retirement. Tony credits the Holy Spirit for initiating and empowering this effort.

Second Half Attendance 2020-2025



Who Can You Bring to the Next Second Half Meeting?



Notes: HRBC Chapter formed in 2024 and Urbanna separated from SH in 2025

This newsletter is for the members of Second Half — a group of Christian men that meets twice each month in four different locations. The group's mission statement reads: To seek a closer relationship with Jesus Christ and try to understand and follow His plan for the rest of our lives. We also seek a deeper relationship with each other through Christian fellowship. More information at www.secondhalfmen.org. To unsubscribe from this newsletter, please email Franklin.Graham, editor. If you have interest in joining Second Half, please contact Skip.Thistle by email or telephone 804-938-8518.



When We Love One Another

by Franklin Graham

The Second Half mission statement emphasizes developing deeper relationships with each other through Christian fellowship. Some of that occurs during the twice-monthly Chapter meetings. But, fellowship frequently occurs outside the meetings when we act like Jesus taught.

Here are just a few examples I've heard about recently:

- Two Second Half members learned of another member in their Chapter who had difficulties with a chair. This was no ordinary chair—this chair was used nearly 24 hours every day because it was the only place this member could sleep without pain. One day two other members fixed the broken chair. Next night, the owner of the chair slept through the night until 8:30am the next day!
- Second Half founder Gordon Prior has been battling various medical issues for more than six months. Nonetheless, he continues to receive many phone calls of encouragement and frequent visits. Gordon and his family greatly appreciate the well wishes and attention.
- Many members helped—or received help—during the snow and ice this winter.
- Numerous people every week across Chapters receive rides and other assistance to get to SH meetings.
- Untold numbers of members receive phone calls, emails and visits that emerge from the prayer lists created in each small group meeting.

It's not always the big, dramatic things that make a difference and build relationships. Most of the time, relationships grow in the form of small efforts, like a phone call or lunch - things we might do any day when we seek to act like Jesus. Love each other!



*by Roy Wood, Second Half Board Member
and NEM Board Member from SH*

NEM Names New Executive Director



Lee Mitchell

Needle's Eye Ministry (NEM) announced in February that Lee Mitchell has been named as the organization's only third Executive Director. Lee met his wife Erica through NEM's Young Professionals community and later served six years on the NEM Board of Directors. For the past 15 years, he has served in executive leadership roles with a national commercial bank and has pastored a local church for seven years, combining both marketplace experience and a deep heart for ministry. Lee and Erica are the proud parents of Madeline (6) and Amelia (3). Lee and his family have a huge heart for the Metro Richmond area and seeing God's kingdom come through the unity of the body of Christ. We hope to introduce Lee to the Second Half community in the next few months.

The NEM Board has shared that Jordan Maroon, previous NEM Executive Director, will transition into a short-term role as Senior Advisor to the Executive Director to support Lee and the NEM team for the month of March. Pray for Jordan to have clarity from God as to his next steps.

Please keep Lee Mitchell, the NEM Board, NEM staff and Jordan Maroon in your prayers. If you have questions, contact Roy Wood.

This newsletter is for the members of Second Half — a group of Christian men that meets twice each month in four different locations. The group's mission statement reads: To seek a closer relationship with Jesus Christ and try to understand and follow His plan for the rest of our lives. We also seek a deeper relationship with each other through Christian fellowship. More information at www.secondhalfmen.org. To unsubscribe from this newsletter, please email [Franklin Graham](mailto:Franklin.Graham), editor. If you have interest in joining Second Half, please contact [Skip Thistle](mailto:Skip.Thistle) by email or telephone 804-938-8518.